



# Malthe Winje

# Cloud Connect

Product Data Sheet

**Malthe Winje Automasjon AS**

Haukeliveien 8,  
1415 Oppegård

+47 66 99 61 00  
[www.mwg.no](http://www.mwg.no)

Organisasjonsnummer:  
868 857 072

## Content

|  |   |
|--|---|
| Cloud Connect .....                            | 0 |
| Description .....                              | 2 |
| Key Features.....                              | 2 |
| Product data.....                              | 1 |
| Information about Malthe Winje Automation..... | 0 |

## Description

Cloud Connect is a robust solution designed to provide secure access to your local installations, regardless of manufacturer. With advanced features such as two-factor authentication, it ensures that only authorized users can access critical systems. Cloud Connect is the ideal solution for organizations seeking secure, flexible, and efficient access to their local installations. With its advanced security features and versatile connectivity options, it empowers users to manage their systems confidently and effectively.



## Key Features

### Universal Connectivity

Seamlessly connects to your facilities, enabling integration across various equipment brands.

### Secure Access:

- Two-factor authentication guarantees that the right users have access.
- Role-based permissions and user management enhance security.
- Built on the Zero Trust principle, ensuring no local logins are required.

### Local Web Access:

Provides secure access to local web interfaces through the MW portal, facilitating easy management and monitoring.

### Real-Time Data Availability:

- Local power prices are accessible via Modbus, allowing for efficient load management with local PLCs.
- Supports local weather forecasts through Modbus integration.

### Versatile Communication Options:

- Functions as a 4G modem for reliable connectivity.
- Can be configured as an SMS modem for alerts and notifications.

### Flexible and Modular Design:

- Supports Docker, enabling a flexible and modular architecture with selectable services.
- Compatible with various platforms including Codesys, Prosys Forge, Softing, Takebishi, and ICONICS.

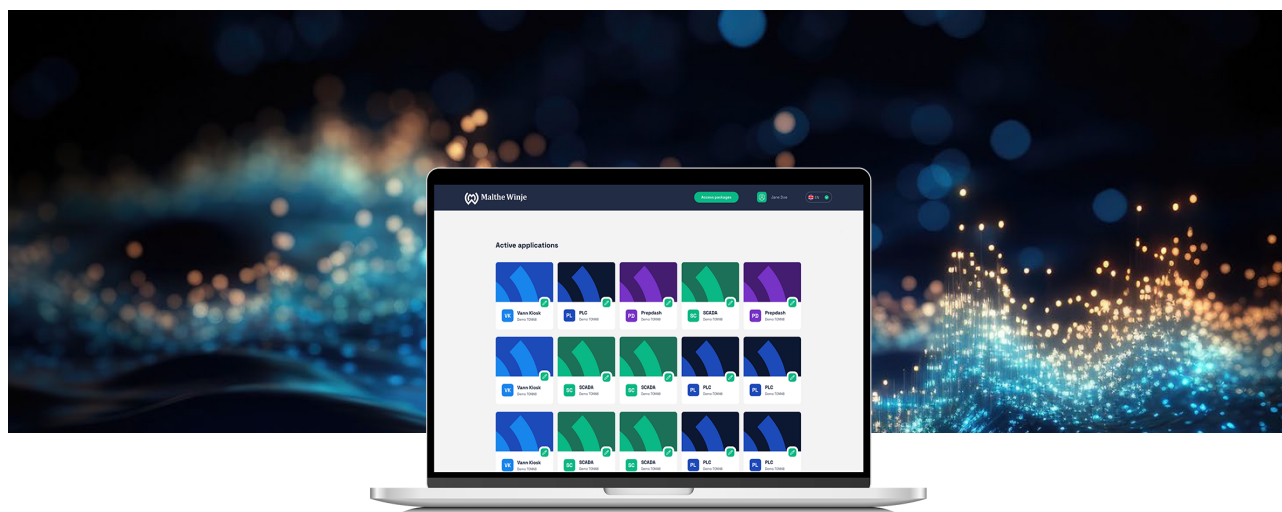
### Enhanced IT Security:

- Features encrypted communication via SSL (Websockets 4.4.3) between devices and the cloud.
- Integrated with Defender for Edge and Sentinel for comprehensive security monitoring.
- 24/7/365 monitoring services ensure continuous oversight.

## Product data

**Specifications:**

|  |  |
|--|--|
| <b>Case</b>  | High-quality all aluminum, surface hard anodized.  |
| <b>CPU</b>   | Intel Celeron J6412 (quad core four threads, 2.0 GHz, Max to 2.6GHz with TPM2)   |
| <b>RAM</b>   | Installed 4Gb. Can be expanded up to 32 Gb.  |
| <b>Storage</b>   | 256 Gb SSD. Can be expanded to 512 Gb or 1 Tb  |
| <b>BIOS</b>  | AMI UEFI BIOS  |
| <b>Chipset</b>   | Intel(R) UHD Graphics  |
| <b>Display port</b>                                    | 1*HDMI, 2*DP (Support Synchronous/asynchronous triple display, resolution max. 4096x2160 @ 60Hz)   |
| <b>Front I/O port</b>                                  | 1*Power switch, 3*USB3.0,3 *USB2.0, 1*COM, 1*SIM card slot   |
| <b>Rear I/O port</b>                                   | 1*DC 12V input, 2*DP, 1*HDMI, 2*2.5G Lans, 1*Audio   |
| <b>Network</b>   | 2*Intel i225-V 2.5G LAN  |
| <b>Wireless/cellular Network</b>                       | Installed - 4G module. 5G or Wi-Fi optional  |
| <b>Power Supply</b>                                    | DC 9-36V input.  |
| <b>Work conditions</b>                                 | Temperature: -10°C _to +60°C, surface air flow. Humidity 0-95% non-condensing  |
| <b>Dimensions</b>                                      | 150 * 126.5 * 45 mm  |
| <b>Weight</b>  | 0.840 Kg   |
| <b>Installation types</b>                              | Desktop. Rail Mount. VESA kit and DIN rail kit included  |
| <b>Warranty</b>  | 3 Years  |
| <b>Long term support and availability to re-order.</b> | Guaranteed for 5 years from sales day. After 5 years slightly different model might be available to re-order (the same functionality and I/O ports, with newer CPU). |



# Information about Malthe Winje Automation

Malthe Winje was established in 1922 and has a long history. The company is 100% owned by the management and has its headquarters in Norway.

Malthe Winje is a technology company. We are at the forefront when it comes to knowledge of new technology, and we offer our customers more than technical solutions. We are a partner that delivers the best and most forward-looking solutions to our customers.

Malthe Winje has a central position within the infrastructure segment. This segment includes the water and sewage industry, building automation, energy production, railways and roads. We will consolidate this position in the years ahead and expect significant growth.

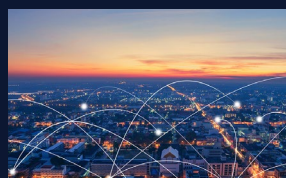
Malthe Winje consists of several companies in Norway, Sweden, Finland, Estonia, Latvia, France and China. In addition, we have several exciting activities and projects in Africa. The group consists of approximately 150 skilled and experienced employees.



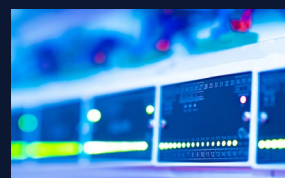
**Water and Wastewater  
Technique**



**Transport and  
Communications**



**Building Automation**



**Energy**



**Hydropower**



**Cloud Solutions**



**Water Preparedness  
Solutions**



**Automation  
Products**



**SCADA**



**Installation material**

**Malthe Winje Automasjon AS**

Haukeliveien 8,  
1415 Oppedgård

+47 66 99 61 00  
[www.mwg.no](http://www.mwg.no)

Organisasjonsnummer:  
868 857 072